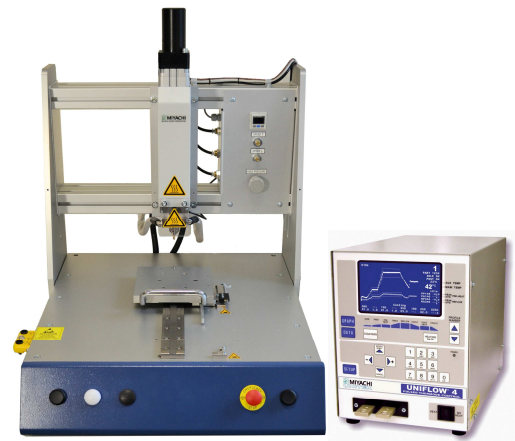


Desktop Series Pulsed Heat Hot Bar systems

Desktop PH Benefits

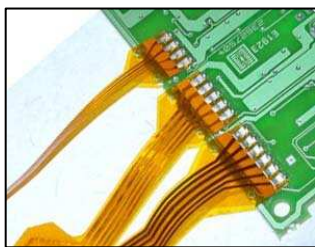
- Small and flexible systems for high quality connections
- Ideal price-performance (throughput) ratio
- Simple adjustable frame construction
- For Heat-Seal bonding, Hot Bar Reflow Soldering and Heat Staking
- Reliable process control, by proven technology of Uniflow Power Supply



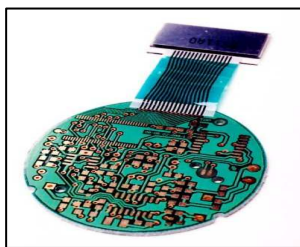
Desktop PH Technology / Features

The Miyachi Europe Desktop Series PH is an integral part of the Hot Bar Systems using Pulsed Heat Technology (Uniflow Power Supply), the SH80 or the SH500 pneumatic Bonding Head and the standard Quick Connect Blocks with Thermo-plane Thermodes. All modules are mounted on a sturdy and easily adjustable frame construction. The Desktop Series includes different product handling features like left-right and front-rear slides as well as rotary tables. All systems offer maximum output and are designed considering ergonomic standards. Optional components for the Desktop Series are optical alignment modules, sarcon & kapton interposer modules and customised product tooling.

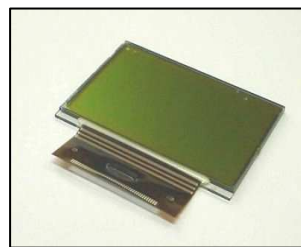
Desktop PH Applications



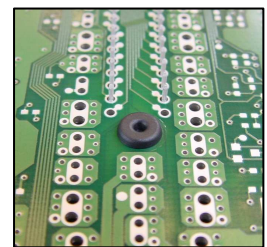
Hot Bar Reflow Soldering



Heat-Seal bonding



ACF Bonding



Heat Staking

Desktop PH Technical Specifications

Dimensions HxWxD (mm)	510 x 550 x 600
Weight (in kg)	40 kg (excluding Uniflow Power Supply)
Power requirements	100 to 240 Vac, 50/60 HZ, 16 Amp max
Air supply	4 – 8 bar [60 – 120 psi], dry & filtered air
Maximum fixture height	50 mm [1.97 Inch]
Gantry open width	520 mm [20.47 Inch]
Fixture assembly baseplate	160 x 160 mm [6.30 x 6.30 Inch]
Starting operation	Two hand control
Operating temperature	15 – 40 °C
Operating humidity	93% @ 40 °C

Bonding Head & Uniflow Technical Specifications

Force range	SH 500: 50 – 500 N @ 6 Bar SH 80 : 8 – 80 N @ 6 bar		
Hot Bar stroke	SH 500: 50.0 mm SH 80 : 25.0 mm		
Temperature range		Heat	60 to 600 °C
Idle	25 to 100 °C	Heat Extended Range	60 to 999 °C
Baseheat	25 to 300 °C	Postheat	25 to 600 °C
Preheat	60 to 300 °C		
Time period (in 0.1 sec increments)		Rise to Heat Time	0 to 9.9 seconds
Base Heat	0 to 99.9 seconds	Heat	0.1 to 99.9 seconds
Rise to Preheat Time	0 to 9.9 seconds	Postheat	0 to 99.9 seconds
Preheat	0 to 99.9 seconds or continuous		
Communication ports	RS-232, RS-485		

For additional specifications, please review the Uniflow-4 Datasheet and the Bonding Head Datasheet

Model Specifications

Desktop DT-150-PH	No movement
Desktop DT-250-PH (manual 2-position front-rear slide)	Stroke between front and bonding position: 200 mm fixed
Desktop DT-260-PH (manual 3-position front-rear slide)	Stroke between first and second bonding position: 0-50 mm
Desktop DT-270-PH (manual 2-position left-right slide)	Stroke between left and right bonding position: 180 mm fixed
Desktop DT-350-PH (automatic 2-position front-rear slide)	Stroke between front and bonding position: 200 mm fixed
Desktop DT-360-PH (automatic 3-position front-rear slide)	Stroke between first and second bonding position: 0-50 mm
Desktop DT-370-PH (automatic 2-position left-right slide)	Stroke between left and right bonding position: 180 mm fixed
Desktop DT-440-PH (manual 2-position turntable)	Turntable diameter: 380 mm
Desktop DT-450-PH (automatic 2-position turntable)	Turntable diameter: 380 mm / turntable movement time: < 2 seconds

Local Representative

Your European Contacts

-  **Miyachi Europe GmbH**
 Lindberghstrasse 1
 DE-82178 Puchheim
 Germany
 T: +49 (0) 89 83 94 030
 F: +49 (0) 89 83 94 0310
 E: info@mec.miyachi.com
-  **Miyachi Europe B.V.**
 Schootense Dreef 21
 5708 HZ Helmond
 The Netherlands
 T: +31 (0) 492 542 225
 F: +31 (0) 492 536 222
 E: webinfo@mec.miyachi.com
-  **Miyachi Europe Kft**
 Mester utca 87.
 HU-1095 Budapest
 Hungary
 T: +36 1 431 9927
 F: +36 1 260 9175
 E: infohu@mec.miyachi.com
-  **Miyachi Europe UK**
 16 Royal Scot Road
 Pride Park DE24 8AJ Derby
 United Kingdom
 T: +44 (0) 1332 361 238
 F: +44 (0) 1332 206 215
 E: infouk@mec.miyachi.com
-  **Miyachi Europe B.V.**
 95D Rue Péreire
 Saint Germain en Laye, 78100
 France
 T: +33 (0) 139 046 430
 F: +33 (0) 130 617 547
 E: infofr@mec.miyachi.com
-  **Miyachi Europe GmbH**
 Strada della Cebrosa, 86
 IT-10156 Torino
 Italy
 T: +39 011 223 83 16
 F: +39 011 274 94 66
 E: infoit@mec.miyachi.com
-  **Miyachi Europe GmbH**
 Tyršova 2084
 252 28 Cernošice/Prague-West
 Czech Republic
 T: +420 251 512 157
 F: +420 251 512 158
 E: infocz@mec.miyachi.com

WWW.MIYACHIEUROPE.COM

All data, images and text described and illustrated in this technical data sheet are subject to change. Miyachi Europe reserves the right to modify the specifications, the design and the illustrations at any time. All rights reserved – July 2012.