

## CNC Laser Welding System Nova 6

### Nova 6 Benefits

- Modular system adaptable to customer needs and budget
- Linear motor or servo motor motion systems with up to 6 CNC axis
- IMS3000 advanced manufacturing software
- Advanced FDA / Mil-Spec compliant data logging
- Remote service and diagnostics
- Automatic laser power monitoring
- G code programming with powerful basic like extensions
- Automatic contour compensation
- Vision integrated motion
- CAM software module to generate weld programs from DXF files.



### Nova 6 Technical Specifications

#### CNC System

- Servo motor driven CNC Robot
- Aerotech U600 or A3200 CNC controller
- Standard up to 6 axis
- Position synchronized laser firing support option for variable weld speed along a contour with high acceleration points

Axis	Motion Range	Repeatability	Speed
X	350 mm	± 0,005 mm	700 mm/s
Y	350 mm	± 0,005 mm	700 mm/s
Z	300 mm	± 0,005 mm	700 mm/s
Drehung	>360°	±0,01°	180°/s

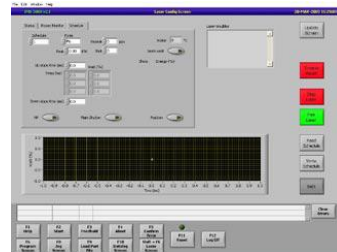
### Nova 6 Applications



## Nova 6 Features & Options

- Fume extraction and filtration system (clean-room compatible)
- Vacuum connections for tooling
- Power monitor to measure power on the workpiece
- Granite baseplate and gantry
- Customer specific tooling and part programming
- Vision controlled motion
- DXF to weld program conversion software
- Integrated control of Laser and CNC systems
- Up/down loading of laser schedules
- Full laser programming on PC
- Part files containing CNC code, laser settings and work instructions
- Datalogging of system messages, laser performance, serial and batch numbers and external power meter measurements
- Computer assisted part position correction
- Password controlled user levels
- Remote system monitoring with web browser
- Remote service using analog phone line

## Nova 6 IMS 3000 Software



Local Representative

### Your European Contacts

○ Miyachi Europe GmbH  
Lindberghstrasse 1  
DE-82178 Puchheim  
Germany  
T: +49 (0) 89 83 94 030  
F: +49 (0) 89 83 94 0310  
E: info@mec.miyachi.com

○ Miyachi Europe UK  
16 Royal Scot Road  
Pride Park DE24 8AJ Derby  
United Kingdom  
T: +44 (0) 1332 361 238  
F: +44 (0) 1332 206 215  
E: infouk@mec.miyachi.com

○ Miyachi Europe GmbH  
Tyršova 2084  
252 28 Cernošice/Prague-West  
Czech Republic  
T: +420 251 512 157  
F: +420 251 512 158  
E: info cz@mec.miyachi.com

○ Miyachi Europe B.V.  
Schootense Dreef 21  
5708 HZ Helmond  
The Netherlands  
T: +31 (0) 492 542 225  
F: +31 (0) 492 536 222  
E: webinfo@mec.miyachi.com

○ Miyachi Europe B.V.  
95D Rue Péreire  
Saint Germain en Laye, 78100  
France  
T: +33 (0) 139 046 430  
F: +33 (0) 130 617 547  
E: infofr@mec.miyachi.com

○ Miyachi Europe Kft  
Mester utca 87.  
HU-1095 Budapest  
Hungary  
T: +36 1 431 9927  
F: +36 1 260 9175  
E: infohu@mec.miyachi.com

○ Miyachi Europe GmbH  
Strada della Cebrosa, 86  
IT-10156 Torino  
Italy  
T: +39 011 223 83 16  
F: +39 011 274 94 66  
E: infoit@mec.miyachi.com

[WWW.MIYACHIEUROPE.COM](http://WWW.MIYACHIEUROPE.COM)

All data, images and text described and illustrated in this technical data sheet are subject to change. Miyachi Europe reserves the right to modify the specifications, the design and the illustrations at any time. All rights reserved – July 2012.